



<b>TS-1105</b>	<b>Stage Rotation Adjustment (MP2/MP2+)</b>	<b>Document Owner:</b> Service Team	<b>Effective Date:</b> APRIL-13-2023	<b>Page 1 of 3</b>
----------------	---	--	---	--------------------

## Purpose

This document explains the process for changing the rotation velocity, acceleration, and deceleration of the plate nest on the MP2/MP2+ stage.

## Intended Use

When microplates are being utilized with live samples that could be damaged from standard settings.

## Required Material and Equipment

Sci-Print MP2 or MP2+  
PC with Software Connected to Device

## Intended Audience

Certified Scinomix Technician  
Super User

## Prerequisites

1. The production standard has been left with the existing settings for the rotation velocity to remain the same.
2. The rotation motor that spins the plate nest must have V10 motor code.

## Procedure

1. Confirm instrument is powered on and connected to the software.
2. Confirm Rotation Motor has Motor Code V10.
  - a. Navigate to **Diagnostics > Hardware**.
  - b. Type in `RPR FF` and click **Send** in the *Serial Communication* box. This reports the current code. If it is 9 or earlier, please contact [service@scinomix.com](mailto:service@scinomix.com)

<b>TS-1105</b>	<b>Stage Rotation Adjustment (MP2/MP2+)</b>	<b>Document Owner:</b> Service Team	<b>Effective Date:</b> APRIL-13-2023	<b>Page 2 of 3</b>
----------------	---	--	---	--------------------

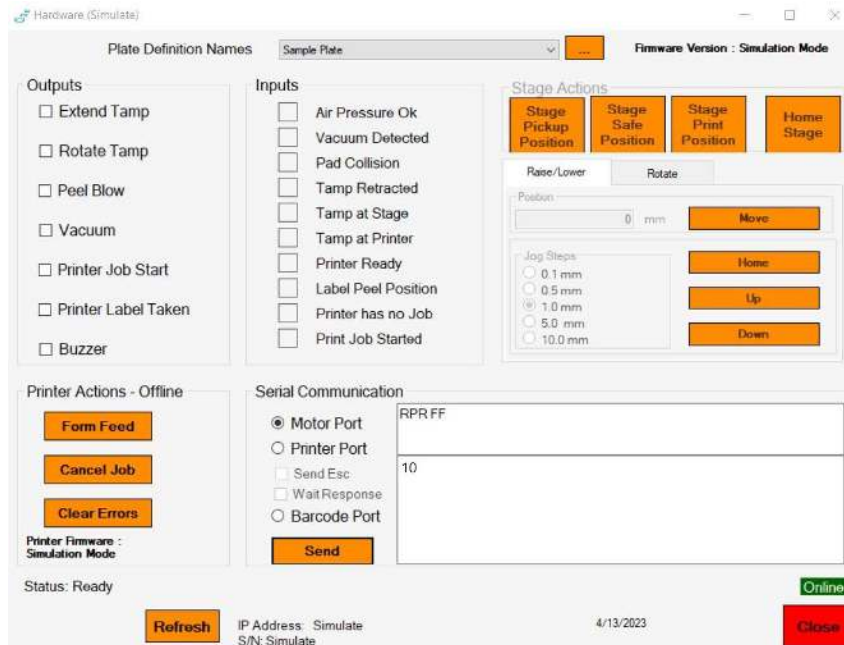


Figure 1.

3. Set new **Velocity**, **Acceleration**, and **Deceleration** parameters by typing in the *Serial Communication* box and clicking send after each command.
  - a. To Set (defaults shown):
    - i. RVL=5000 → Click **Send**.
    - ii. RZA=8000 → Click **Send**.
    - iii. RZD=8000 → Click **Send**.
    - iv. **Rs** → Click **Send** to Save.
  - b. To Check Set Parameters
    - i. RPR VL → Click **Send**
    - ii. RPR ZA → Click **Send**
    - iii. RPR ZD → Click **Send**

**NOTE:** *There is not a standard to slow down. The technician or super user tries values until they achieve the desired parameters. It is recommended that all parameters are adjusted at the same scale. For example. if velocity is reduced by 25%, the other parameters should also be reduced by 25%.*

*If you need additional assistance, please call our service department at 314-298-9800 or email [service@scinomix.com](mailto:service@scinomix.com).*



<b>TS-1105</b>	<b>Stage Rotation Adjustment (MP2/MP2+)</b>	<b>Document Owner:</b> Service Team	<b>Effective Date:</b> APRIL-13-2023	<b>Page 3 of 3</b>
----------------	---	--	---	--------------------

## Definitions

N/A

## Revision History

<b>Version:</b>	<b>Change:</b>	<b>Effective Date:</b>	<b>Approved by:</b>
A	NEW	APRIL-13-2023	Service