



TS-1095	Adjusting the Roller Sensor	Document Owner: Service Department	Effective Date: AUG-30-2022	Page 1 of 5
----------------	------------------------------------	--	---------------------------------------	--------------------

Purpose

This document provides the steps required to adjust the Roller Sensor on the Sci-Print VX2/VXL/Solo.

Intended Use

If the roller fails to grip a tube after an attempt, or the roller has the tube but the software displays an error stating the tube is not in the roller.

Required Material and Equipment

- 2mm Allen wrench
- Small, flat head screwdriver

Intended Audience

Certified Scinomix Technician (CST)

Prerequisites

N/A

Procedure

1. Power off air.
2. Engage the E-stop.
3. Pull the instrument close to the edge of the table so that the roller can be extended with area to work.
4. Switch the run selector off of *RUN*, by pushing in and turning so that *RUN* is no longer showing on top.

TS-1095	Adjusting the Roller Sensor	Document Owner: Service Department	Effective Date: AUG-30-2022	Page 2 of 5
----------------	------------------------------------	--	---------------------------------------	--------------------



Figure 1.

5. Pull the stage out over the edge of the table.



Figure 2.

TS-1095	Adjusting the Roller Sensor	Document Owner: Service Department	Effective Date: AUG-30-2022	Page 3 of 5
---------	-----------------------------	---------------------------------------	--------------------------------	-------------

- Remove the roller cover by removing the two screws holding it in place on the printer side using a 2mm allen wrench.

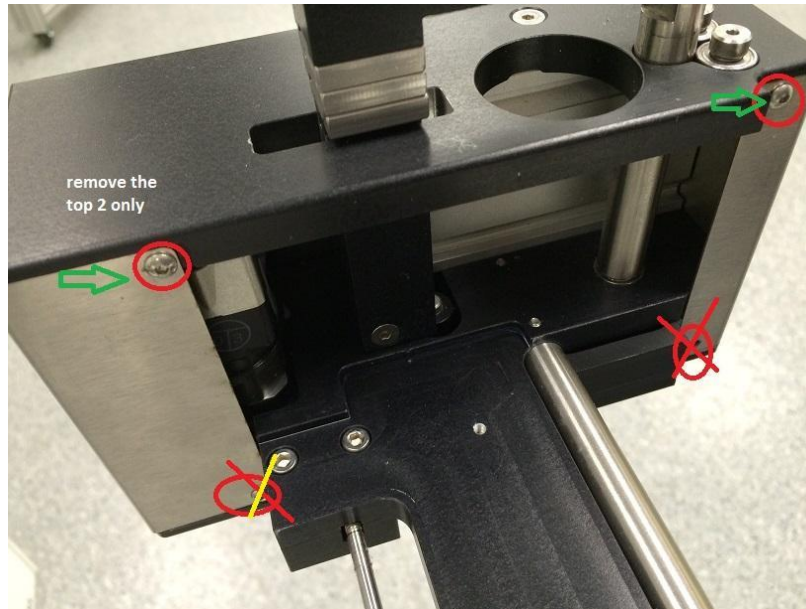


Figure 3.

- Remove the two screws on the underside (2mm allen), then pull the cover down and off.

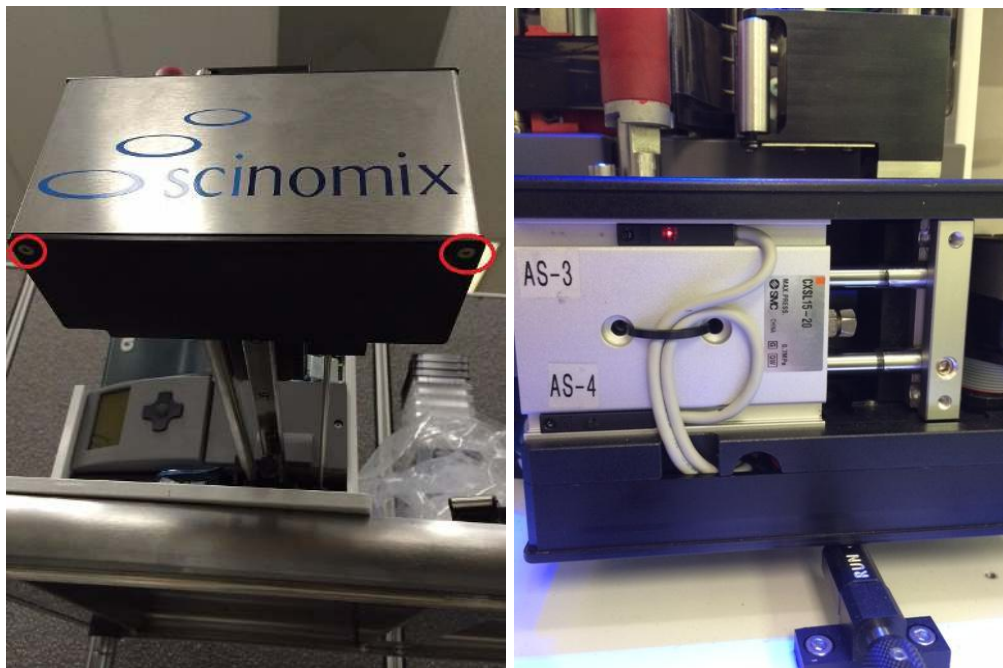


Figure 4. Cover in place and then removed

TS-1095	Adjusting the Roller Sensor	Document Owner: Service Department	Effective Date: AUG-30-2022	Page 4 of 5
----------------	------------------------------------	--	---------------------------------------	--------------------

8. Notice the sensor at the top has a red LED lit when the roller is open. If there are no obstructions and the LED is not lit it will need to be adjusted.



Figure 6. This is the other sensor tripped when the roller is closed. If there are no obstructions and the LED is not lit it needs to be adjusted.

9. To adjust the sensor:
- Loosen the set screw on the sensor itself, it is a tiny flat head screw next to the LED.
 - Make sure the clamp roller is in the position you are adjusting for i.e all the way open or completely closed.
 - Slide the sensor in the opposite direction of the other sensor until the LED comes on. (usually only a small increment).
 - Tighten the set screw.
 - Test the operation by moving the clamp roller open and closed watching the LED's on the sensors for correct operation.
10. Test the roller open/closed positions by clicking **Diagnostics > Hardware**, and toggling the **Outputs** checkbox for *Close Roller*.
11. Confirm that the **Inputs** show *Roller Open* when the roller is in the open position, and *Roller Closed* when the roller is in the closed position.
12. When adjusted properly the roller assembly housing can be put back on.

If you need additional assistance, please call our service department at 314-298-9800 or email service@scinomix.com.



TS-1095	Adjusting the Roller Sensor	Document Owner: Service Department	Effective Date: AUG-30-2022	Page 5 of 5
----------------	------------------------------------	--	---------------------------------------	--------------------

Definitions

N/A

Revision History

Version:	Change:	Effective Date:	Approved by:
A	New	AUG-30-2022	Service