

TS-1092	Replace the Roller Assembly (A2+ on VX2/VXL/Solo)	Document Owner: Service Department	Effective Date: AUG-24-2022	Page 1 of 10
----------------	--	--	---------------------------------------	---------------------

Purpose

This document provides the steps required to replace the roller assembly for the Cab A2+ printer on the Sci-Print VX2/VXL/Solo.

Intended Use

When the CAB A2+ printer roller assembly needs to be replaced.

Required Material and Equipment

2.5 metric allen wrench

Intended Audience

Certified Sciominix Technicians

Prerequisites

N/A

Procedure

1. Power off the instrument and air.
2. Remove the deck tray by pushing the latch on the quick release valve.
3. Disconnect the airline.
4. Remove the tray and set it aside.



Figure 1.

5. Remove the four bolts from the front plate with a 2.5 metric allen wrench.
6. Open the label clamp, loosen the bolt, and remove.

TS-1092	Replace the Roller Assembly (A2+ on VX2/VXL/Solo)	Document Owner: Service Department	Effective Date: AUG-24-2022	Page 2 of 10
---------	---	---------------------------------------	--------------------------------	--------------



Figure 2.

7. Push in on the disconnect valve on the peel blow airline and disconnect the airline.



Figure 3.

8. Disengage the Run select knob and extend the roller assembly fully to move it out of the way.

TS-1092	Replace the Roller Assembly (A2+ on VX2/VXL/Solo)	Document Owner: Service Department	Effective Date: AUG-24-2022	Page 3 of 10
---------	---	---------------------------------------	--------------------------------	--------------



Figure 4.

9. Slide the printer to the left and tilt the right side up to reach in and disconnect the printer power cord and the communication cable.
10. Disconnect both cables.
11. Remove the printer and set aside.

TS-1092	Replace the Roller Assembly (A2+ on VX2/VXL/Solo)	Document Owner: Service Department	Effective Date: AUG-24-2022	Page 4 of 10
---------	---	---------------------------------------	--------------------------------	--------------



Figure 5.

12. Disconnect 2nd energy chain link from bolted bracket.

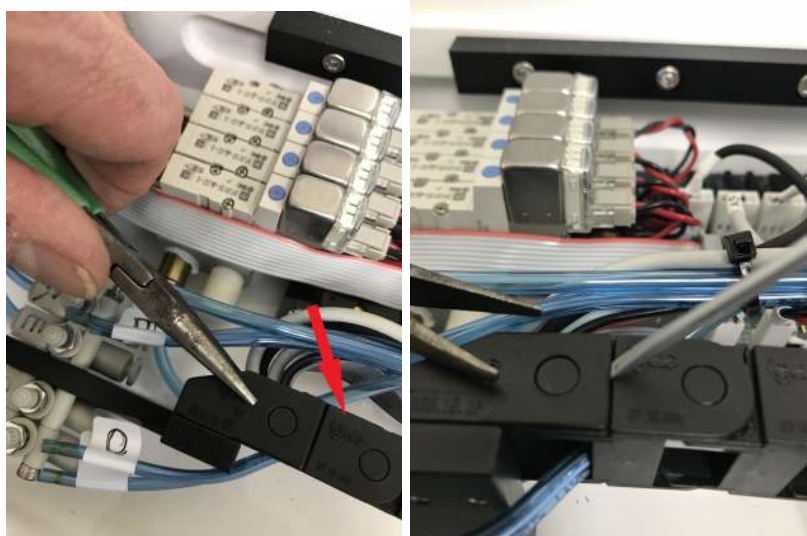


Figure 6.

13. Disconnect and label the open and close airlines.

Note: In newer models the airlines are color coded, eliminating the need for labels.

TS-1092	Replace the Roller Assembly (A2+ on VX2/VXL/Solo)	Document Owner: Service Department	Effective Date: AUG-24-2022	Page 5 of 10
---------	---	---------------------------------------	--------------------------------	--------------



Figure 7.

14. Cut these four zip ties being careful not to cut any other wires or airlines. Then disconnect these five wires.

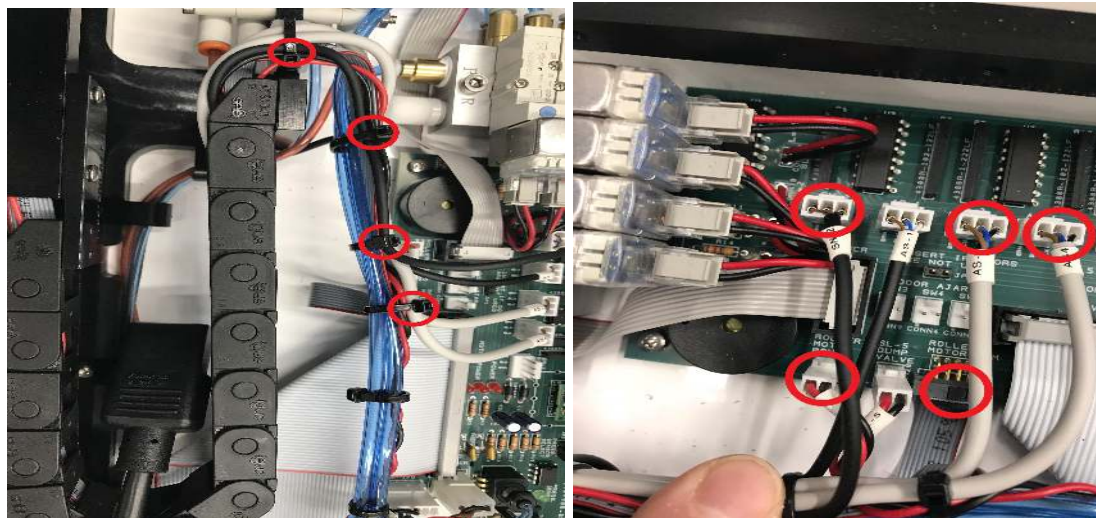


Figure 8.

TS-1092	Replace the Roller Assembly (A2+ on VX2/VXL/Solo)	Document Owner: Service Department	Effective Date: AUG-24-2022	Page 6 of 10
---------	---	---------------------------------------	--------------------------------	--------------

15. Remove the two bolts on the inside of the roller. Remove the shaft.

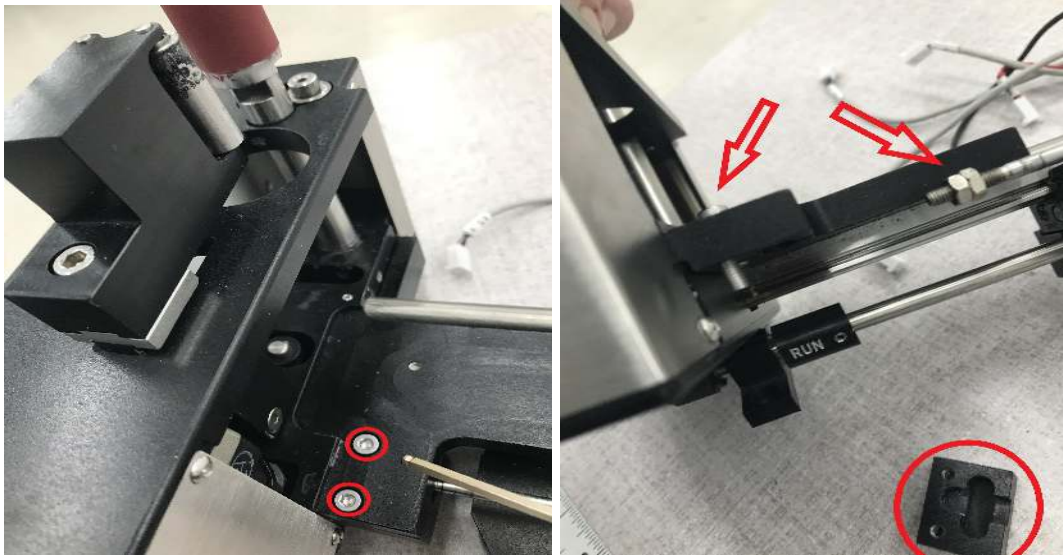


Figure 9.

16. Acquire help in tilting the machine back when working on a VX2. For a VXL, remove the base and place it on its side. For a Solo place it on its side. Remove the four screws from the bottom.

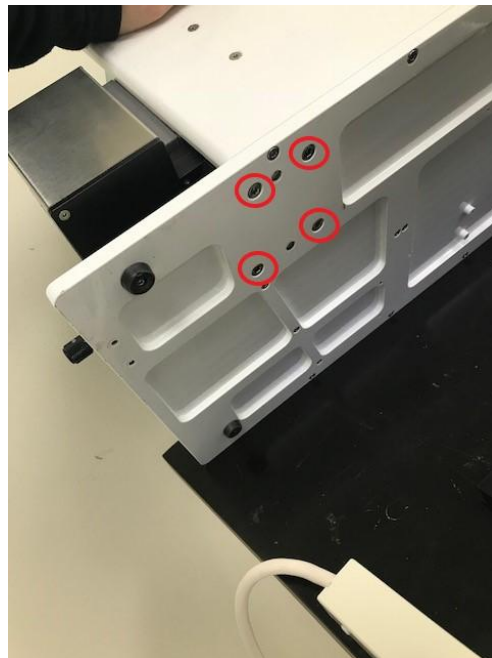


Figure 10.

TS-1092	Replace the Roller Assembly (A2+ on VX2/VXL/Solo)	Document Owner: Service Department	Effective Date: AUG-24-2022	Page 7 of 10
----------------	--	--	---------------------------------------	---------------------

17. Turn the base or machine back to right side up.
18. Disconnect the two bolts in the front of the roller assembly, and the two bolts in the front.

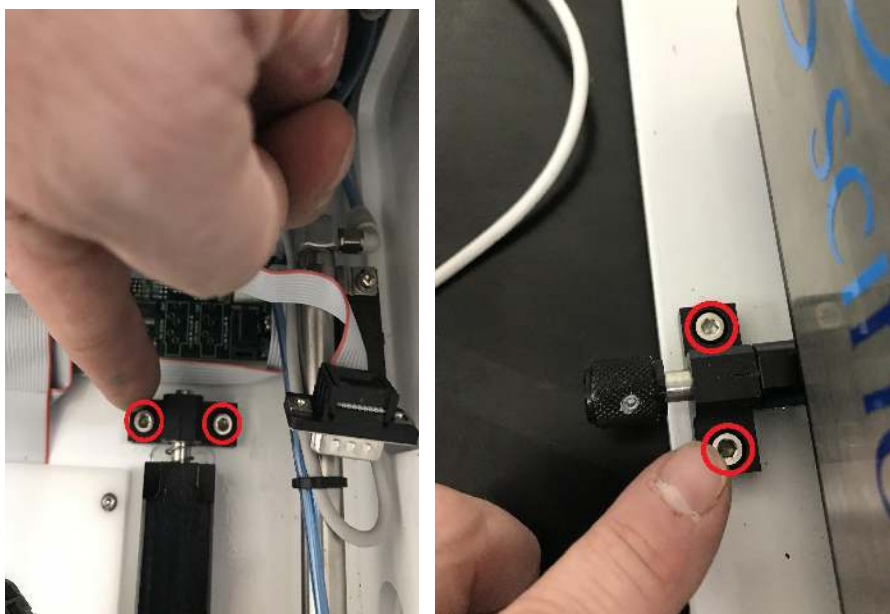


Figure 11.

19. Pull the roller assembly off the dowel pins and set it to the side.
20. Remove the four bolts from the bottom of the assembly.

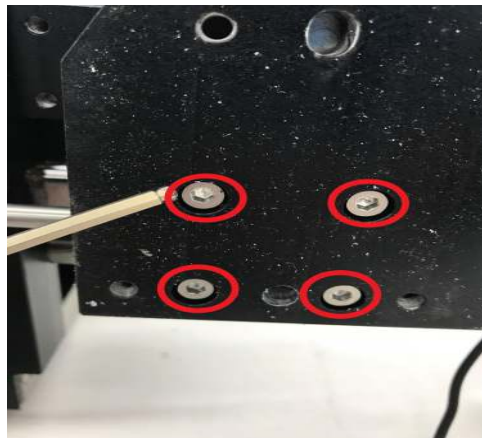


Figure 12.

TS-1092	Replace the Roller Assembly (A2+ on VX2/VXL/Solo)	Document Owner: Service Department	Effective Date: AUG-24-2022	Page 8 of 10
----------------	--	--	---------------------------------------	---------------------

21. Set the roller assembly base aside and remove the four bolts from the bearing slide.

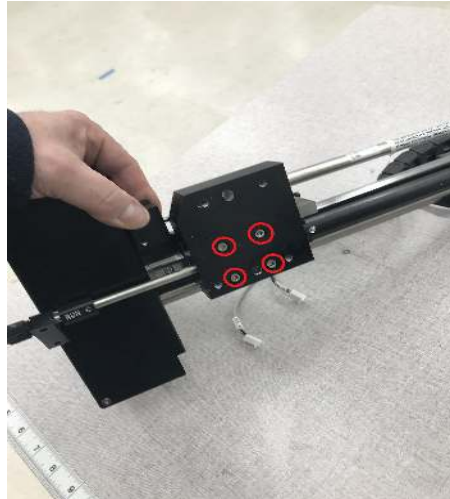


Figure 13.

14. Replace in reverse order.

Additional Notes

There are a few things to be aware of when executing this job. Figure 14 below shows the two different roller assemblies in which the type needed should be identified prior to starting this procedure.

TS-1092	Replace the Roller Assembly (A2+ on VX2/VXL/Solo)	Document Owner: Service Department	Effective Date: AUG-24-2022	Page 9 of 10
----------------	--	--	---------------------------------------	---------------------



Figure 14.

Some of the older machines might also have some four prong connectors connected to the IO board. These can be changed over to three prong connectors, but they also fit on the three prong connectors. Ensure the wires are lined up on the right pins. In Figure 15 below there are only three wires attached to the four pin connector. If using a four pin connector, make sure each wire connects to a pin.

TS-1092	Replace the Roller Assembly (A2+ on VX2/VXL/Solo)	Document Owner: Service Department	Effective Date: AUG-24-2022	Page 10 of 10
---------	---	---------------------------------------	--------------------------------	---------------

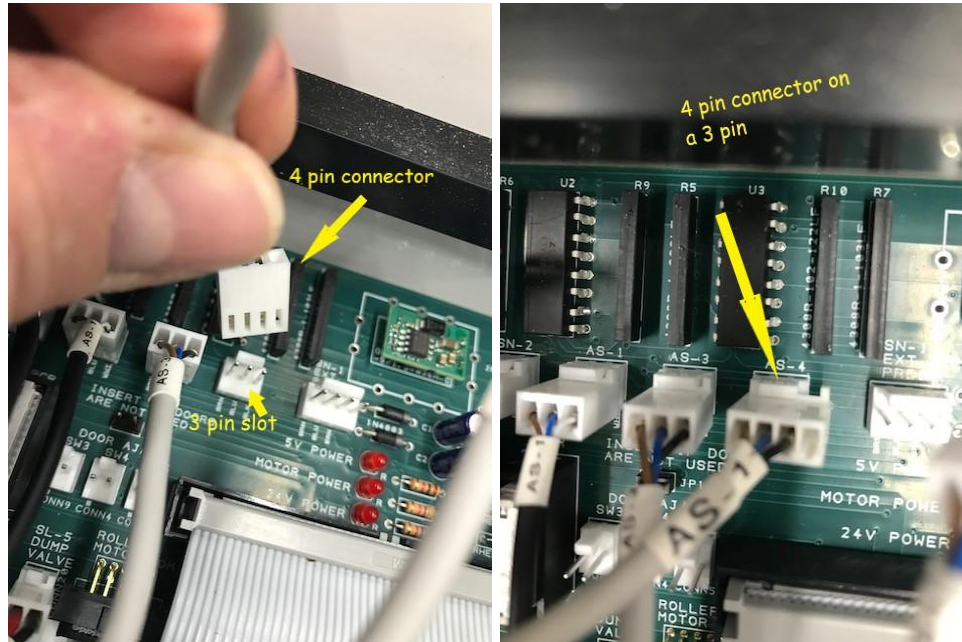


Figure 15.

If you need additional assistance, please call our service department at 314-298-9800 or email service@scinomix.com.

Definitions

N/A

Revision History

Version:	Change:	Effective Date:	Approved by:
A	NEW	AUG-24-2022	Service