

TS-1090	Replacing the MP2 Base Plate (SQUIX)	Document Owner: Service Department	Effective Date: AUG-22-2022	Page 1 of 4
----------------	---	--	---------------------------------------	--------------------

Purpose

This document provides the steps required to replace the MP2 Base Plate on the SQUIX printer.

Intended Use

If the MP2 Base plate on the SQUIX printer needs to be replaced.

Required Material and Equipment

N/A

Intended Audience

End users of the MP2

Prerequisites

N/A

Procedure

1. Power off both the printer and the base of the MP2.
2. Unplug the communication and power cables from the side and back.



Figure 1.

TS-1090	Replacing the MP2 Base Plate (SQUIX)	Document Owner: Service Department	Effective Date: AUG-22-2022	Page 2 of 4
----------------	---	--	---------------------------------------	--------------------

3. The printer is now free to pull off the base. Remove and turn it upside down to expose the base.
4. Remove the five screws securing the base.

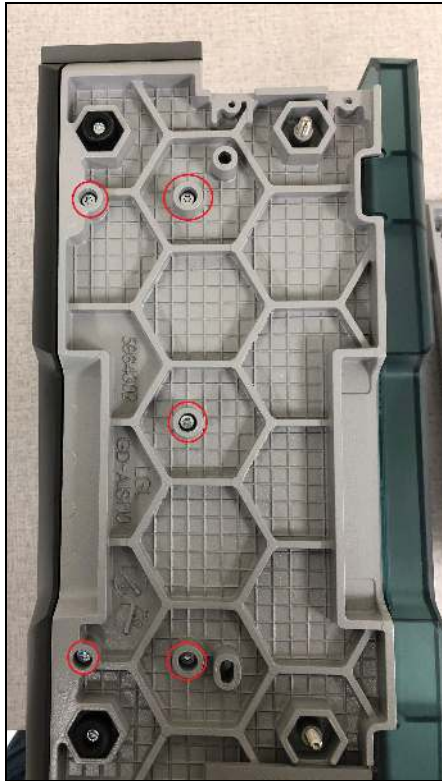


Figure 2.

5. Remove the single screw holding the base lip to the printer.



Figure 3.

TS-1090	Replacing the MP2 Base Plate (SQUIX)	Document Owner: Service Department	Effective Date: AUG-22-2022	Page 3 of 4
---------	--------------------------------------	---------------------------------------	--------------------------------	-------------

6. The base plate is now free to pull off the printer.
7. Assemble the new base plate in reverse order.
8. Secure the printer back onto the base of the MP2, and plug all cables back into the printer.
9. Adjust the new set screws as needed to straighten out the label placement.

Note: These screws should be adjusted to be even length with the rubber feet of the base plate.



Figure 4.

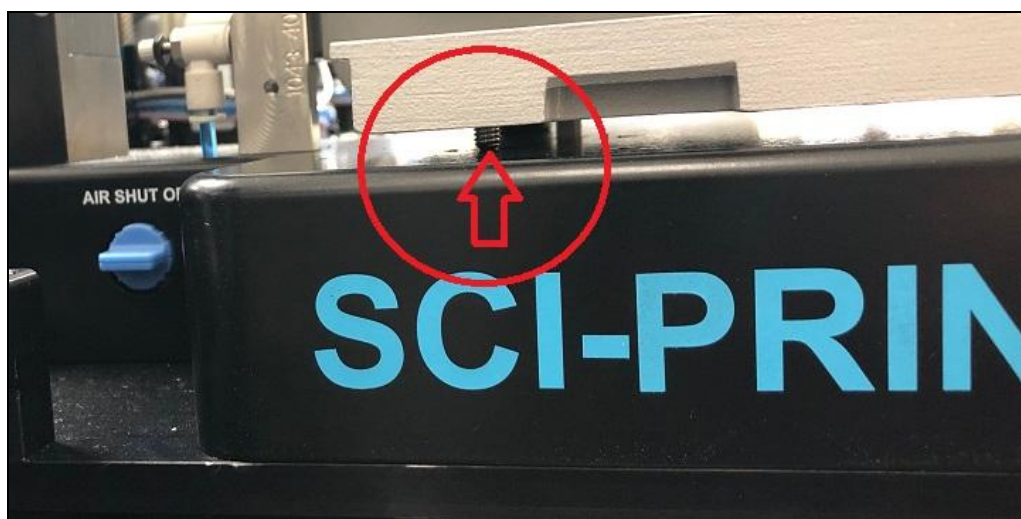


Figure 5.

TS-1090	Replacing the MP2 Base Plate (SQUIX)	Document Owner: Service Department	Effective Date: AUG-22-2022	Page 4 of 4
----------------	---	--	---------------------------------------	--------------------

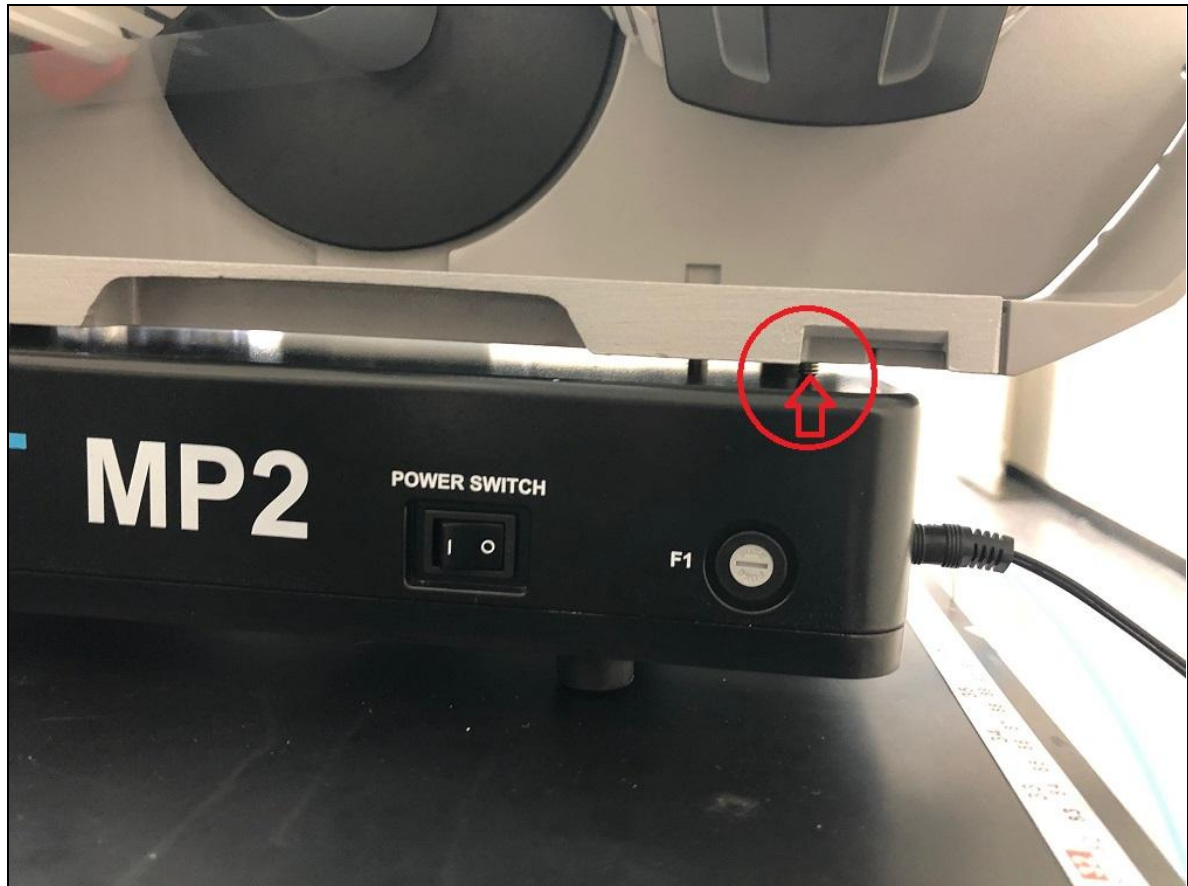


Figure 6.

If you need additional assistance, please call our service department at 314-298-9800 or email service@scinomix.com.

Definitions

N/A

Revision History

Version:	Change:	Effective Date:	Approved by:
A	New	AUG-22-2022	Service