

TS-1089	Adjusting the Label Gap Sensor (CAB A2+ on VX2/VXL/Solo)	Document Owner: Service Department	Effective Date: AUG-22-2022	Page 1 of 4
----------------	---	--	---------------------------------------	--------------------

Purpose

This document provides the steps required to adjust the label gap sensor on the Cab A2+ printer on the Sci-Print VX2/VXL/Solo.

Intended Use

If adjustments to the label gap sensor are deemed necessary on an A2+ printer.

Required Material and Equipment

N/A

Intended Audience

End users of the Sci-Print VX2/VXL or SOLO

Prerequisites

N/A

Procedure

1. Make sure the labels pass in front of the guide bar as shown in Figure 1 below.

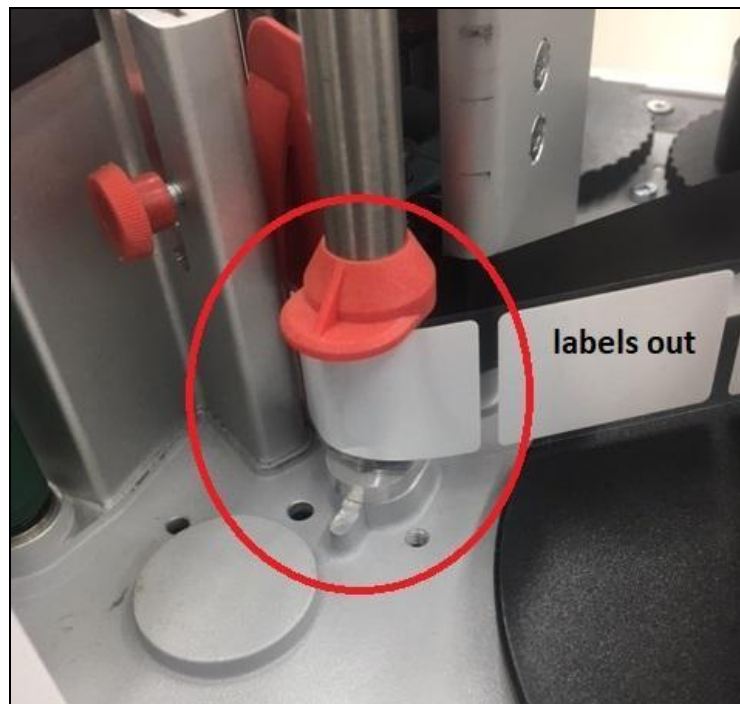


Figure 1.

TS-1089	Adjusting the Label Gap Sensor (CAB A2+ on VX2/VXL/Solo)	Document Owner: Service Department	Effective Date: AUG-22-2022	Page 2 of 4
----------------	---	--	---------------------------------------	--------------------

2. Ensure the labels pass through the sensor.

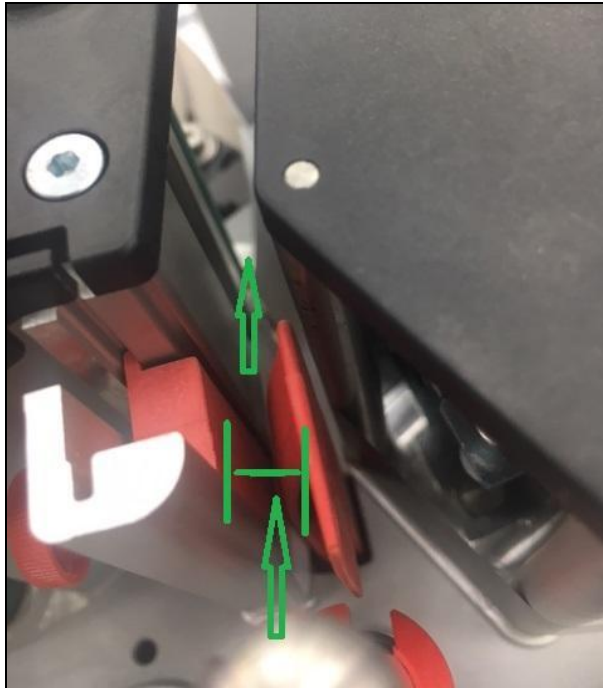


Figure 2.

3. To ensure the sensor is positioned in the center of the label, align the marker on the rear of the sensor as shown in Figure 3. Adjust if needed by following steps 4 and 5.

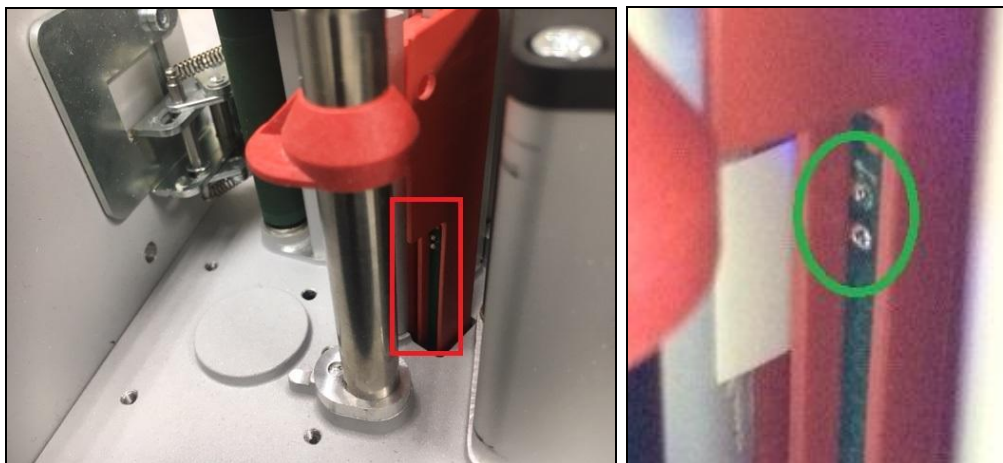


Figure 3.

TS-1089	Adjusting the Label Gap Sensor (CAB A2+ on VX2/VXL/Solo)	Document Owner: Service Department	Effective Date: AUG-22-2022	Page 3 of 4
----------------	---	--	---------------------------------------	--------------------

4. Loosen the locking screw.



Figure 4.

5. Slide the sensor up or down to align on the center of the label.

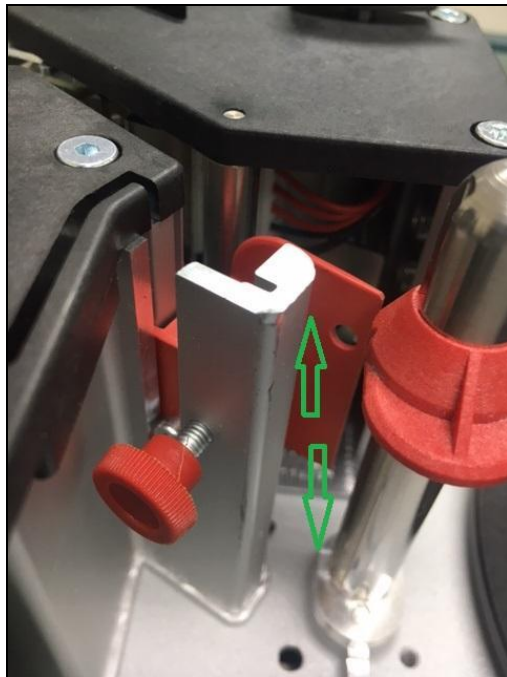


Figure 5.



TS-1089	Adjusting the Label Gap Sensor (CAB A2+ on VX2/VXL/Solo)	Document Owner: Service Department	Effective Date: AUG-22-2022	Page 4 of 4
----------------	---	--	---------------------------------------	--------------------

If you need additional assistance, please call our service department at 314-298-9800 or email service@scinomix.com.

Definitions

N/A

Revision History

Version:	Change:	Effective Date:	Approved by:
A	New	AUG-22-2022	Service