

Sci-Print MP Series Label Install Guide and Checkpoints

Purpose

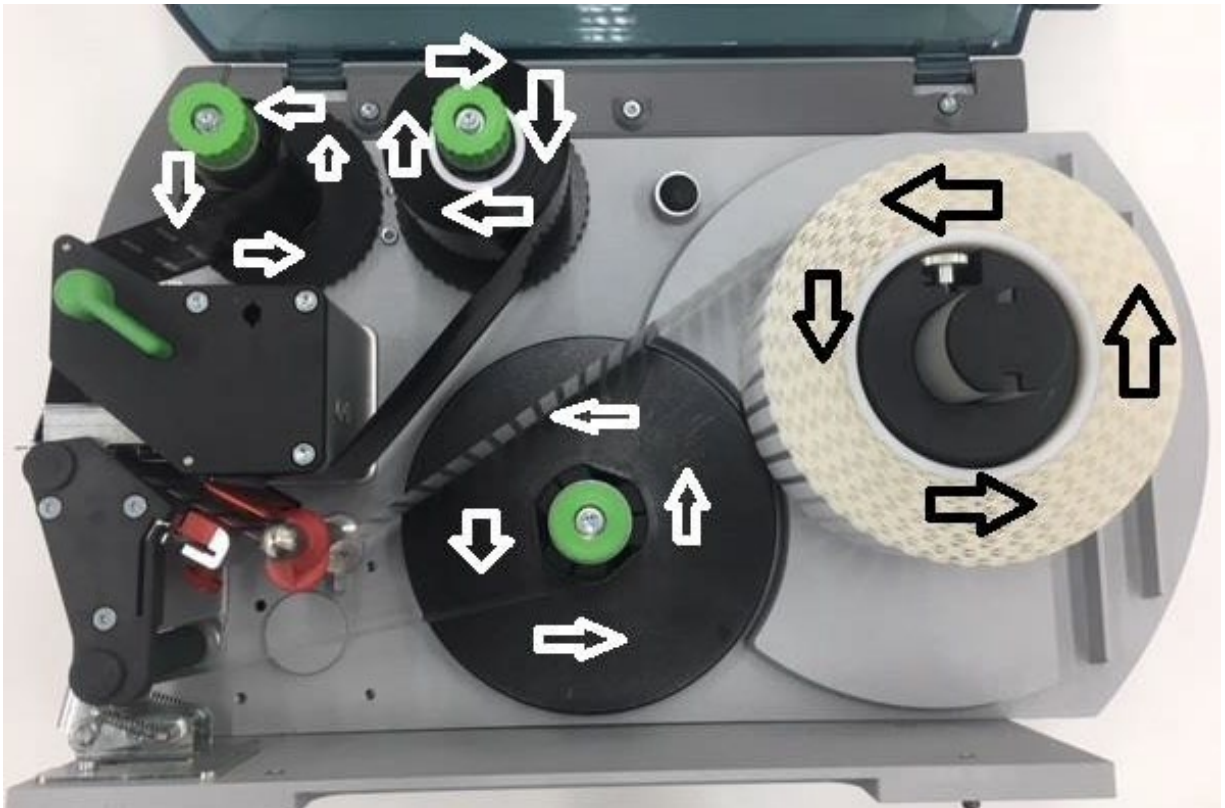
This guide is intended for an end user or technician to use when installing Sci-Print MP Series labels. Please follow the instructions below to properly install the labels.

Who Should Use This Troubleshooting Guide?

End users and technicians of the Sci-Print MP Series.

Instructions

1. Add new roll of labels and ribbon to feed spool. Make sure the labels and ribbon feed as shown below.

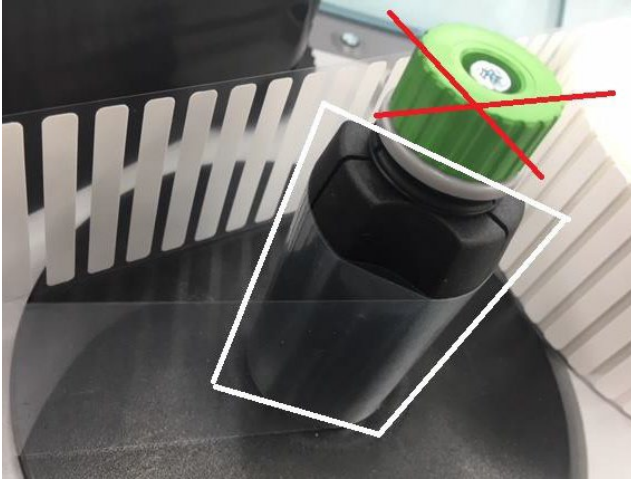


2. Pull approximately 2 feet of labels past the peel plate and leave them slack.
3. Feed the labels through the 3 tension posts on the waste spool.

TS-1046
8/8/19



4. Turn just the black portion of the spool counterclockwise until label tape becomes tight to spool. *note some labels may be peeled off during this process*



5. Turn the Green cap of the return spool to lock in tension.



TS-1046
8/8/19

6. On a table prepare the ribbon by unwrapping new roll and getting a spare cardboard roll ready for the waste.



7. Untape end of ribbon from fresh roll, and tape to waste roll so that the bottom of the ribbon is perfectly in line with the waste roll.



8. Place new roll of ribbon on feed spool so that the ribbon feeds from the right side of the spool.

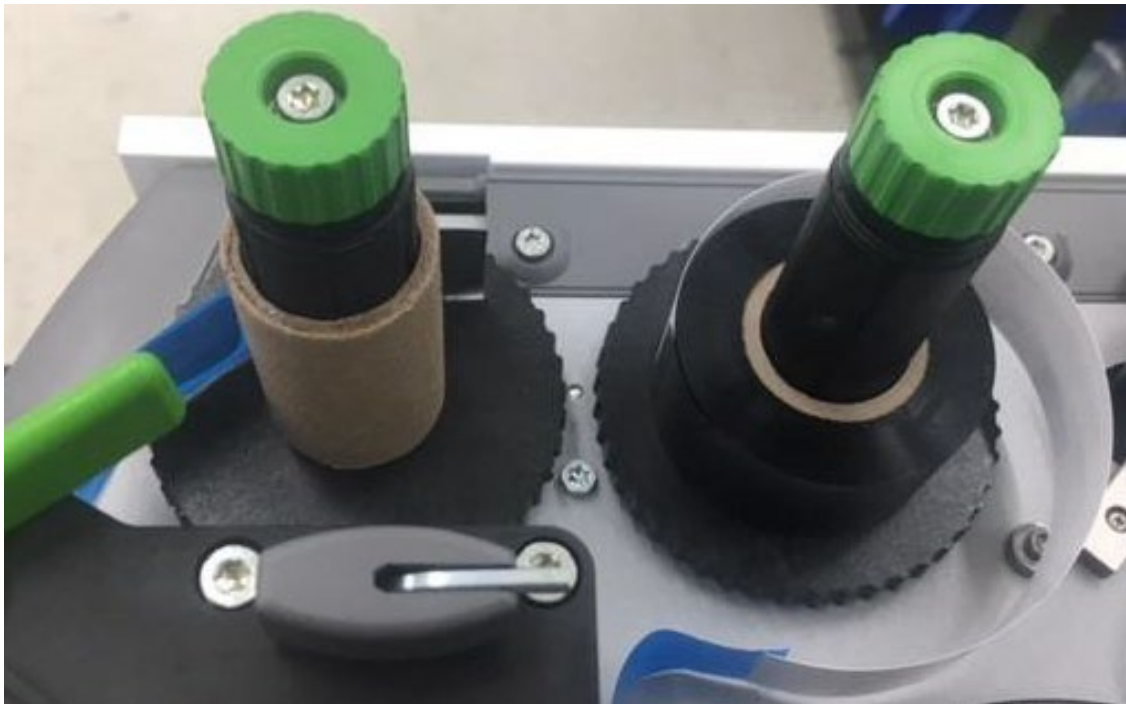


TS-1046
8/8/19

9. Feed ribbon through print head.



10. Slide cardboard spool over ribbon waste spool.



11. Tighten green lock caps at the top of both feed, and waste spool.

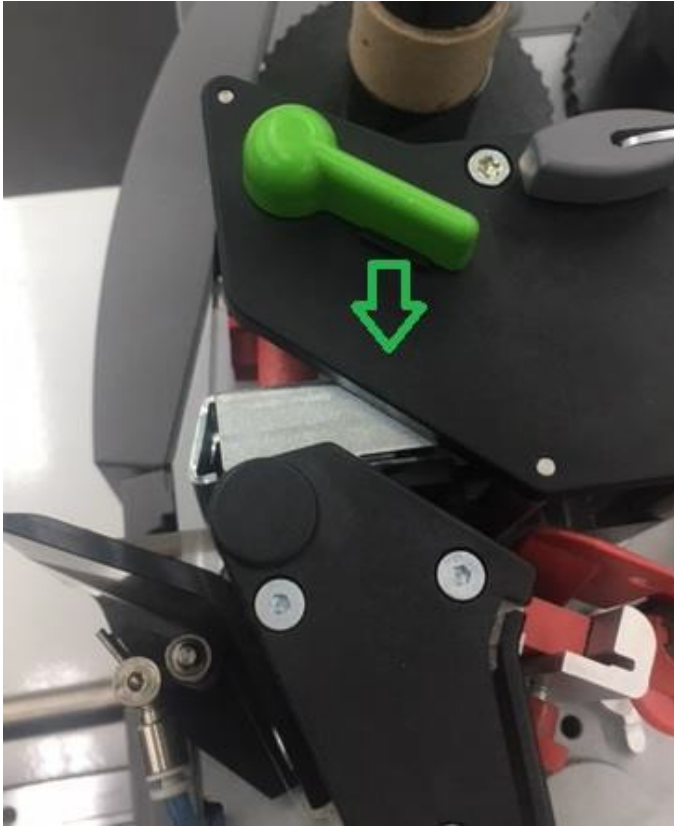


12. Turn waste spool counterclockwise 10 times or until ribbon becomes smooth from end to end.

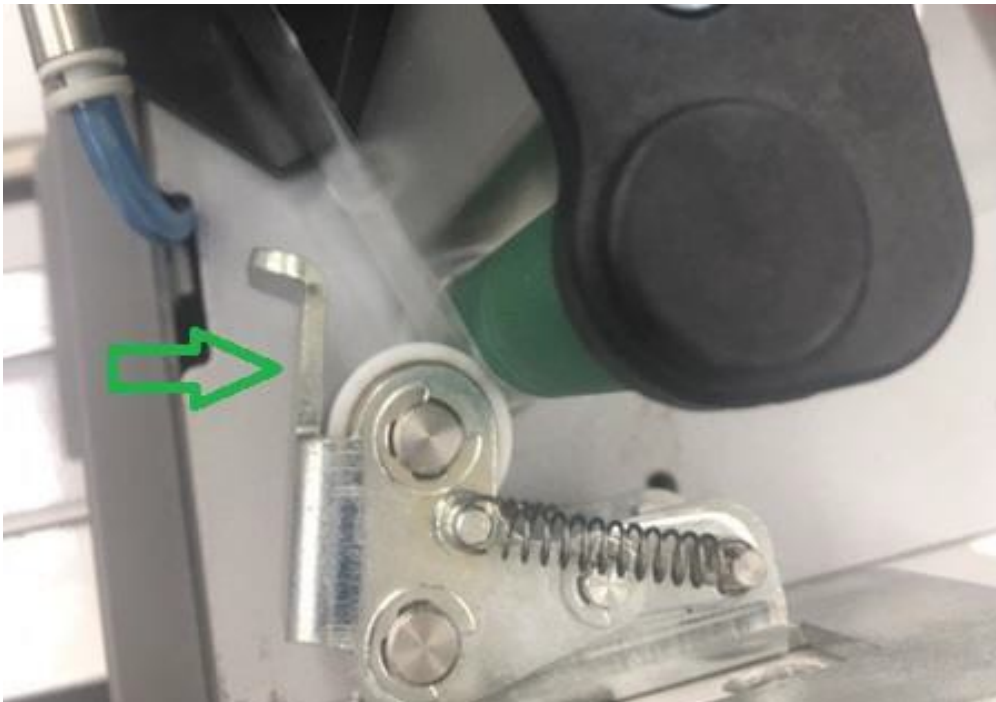


TS-1046
8/8/19

13. Close print head.



14. Close stainless-steel tension clip.



TS-1046
8/8/19

15. Press feed on printer front plate, then catch and throw away blank labels fed out. (should be 1-3)



16. Unit is now ready to test.