

TS-1031	Scinomix Fuse Replacement	Document Owner: Service Department	Effective Date: AUG-22-2022	Page 1 of 6
---------	---------------------------	---------------------------------------	--------------------------------	-------------

Purpose

This document provides the steps required to replace Scinomix fuses. Scinomix products use one of two types of fuses based on design variants.

Intended Use

Fuses may need to be replaced in the event of a power surge or short circuit. Fuse replacement is a maintenance procedure that can be performed by the end user after carefully reading and understanding this document.

Required Material and Equipment

- Replacement fuse for the instrument
- Flat head screwdriver

Intended Audience

Scinomix End users.

Prerequisites

Before replacing a fuse, the user must read and understand this document.



Before performing any service or maintenance, the user must read and understand the User Guide for the specified model to understand any hazards associated with it. Failure to do so may cause a hazard to the user or possible damage to the equipment.



It is important to power off the instrument and disconnect power supply on any instrument before fuse replacement. Failure to validate disconnection may cause a hazard.

TS-1031	Scinomix Fuse Replacement	Document Owner: Service Department	Effective Date: AUG-22-2022	Page 2 of 6
---------	---------------------------	---------------------------------------	--------------------------------	-------------

Fuse Types

There may be one or more fuses on the control panel of the instrument. The following images are intended for demonstrate purposes only, and provide visual examples of types for identification. The actual control panel of the instrument may appear differently than the images below..

Screwdriver bracket



Figure 1.

Thumb screw bracket



Figure 2.

Replacement: Screwdriver Bracket

1. Use a flat head screwdriver to push the fuse in lightly, and turn counter-clockwise a ¼ turn to release the fuse.

Note: The fuse is spring loaded and should pop out of its location on the control panel.

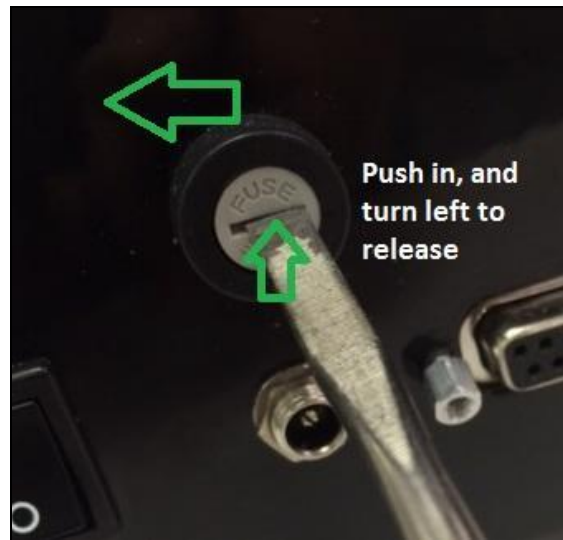


Figure 3.

TS-1031	Scinomix Fuse Replacement	Document Owner: Service Department	Effective Date: AUG-22-2022	Page 3 of 6
----------------	----------------------------------	--	---------------------------------------	--------------------

2. Pull gently to remove the fuse.

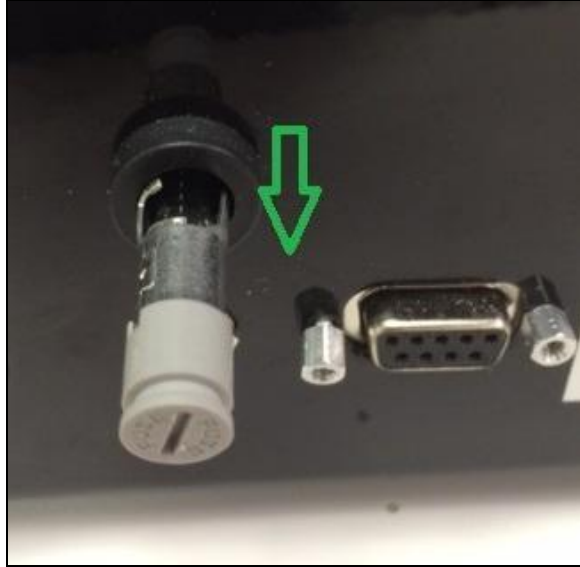


Figure 4.

3. Separate the fuse from the bracket.



Figure 5.

TS-1031	Scinomix Fuse Replacement	Document Owner: Service Department	Effective Date: AUG-22-2022	Page 4 of 6
----------------	----------------------------------	--	---------------------------------------	--------------------

4. Insert the new fuse. The fuse is universal making the orientation irrelevant.

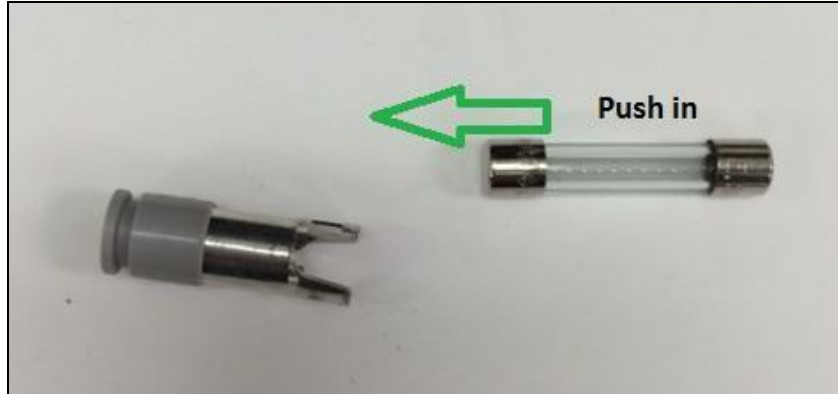


Figure 6.

5. Gently slide the fuse back into its location on the control panel. Reverse steps for removal to complete replacement.
6. Power on and test instrument functionality using the instructions provided in the User Guide.

TS-1031	Scinomix Fuse Replacement	Document Owner: Service Department	Effective Date: AUG-22-2022	Page 5 of 6
---------	---------------------------	---------------------------------------	--------------------------------	-------------

Replacement: Thumb Screw Bracket

1. Using thumb and index finger, push in lightly and turn the fuse knob counter-clockwise a $\frac{1}{4}$ turn to release the fuse. The fuse is spring loaded and should pop out of its location on the control panel.



Figure 7.

2. Remove the fuse from the instrument.
3. Separate the fuse from the bracket.



Figure 8.

TS-1031	Scinomix Fuse Replacement	Document Owner: Service Department	Effective Date: AUG-22-2022	Page 6 of 6
----------------	----------------------------------	--	---------------------------------------	--------------------

4. Insert new fuse. The fuse is universal making the orientation irrelevant.

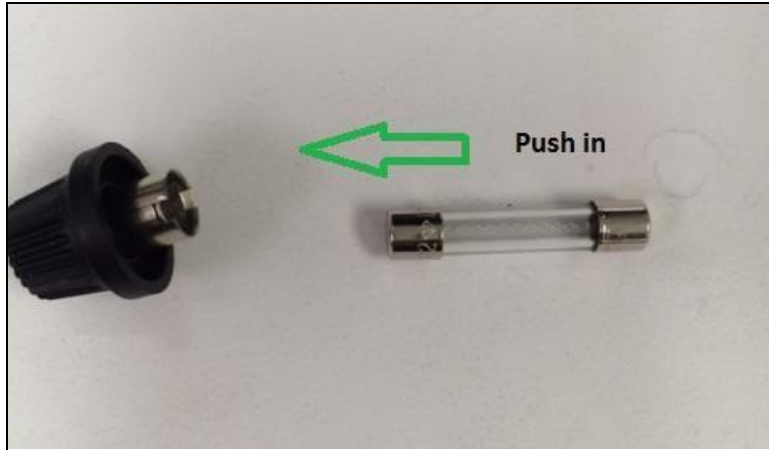


Figure 9.

5. Gently slide the fuse back into its location on the control panel. Reverse the removal steps to complete replacement.
6. Power on and test the instrument functionality using the instructions provided in the User Guide.

If you need additional assistance, please call our service department at 314-298-9800 or email service@scinomix.com.

Definitions

N/A.

Revision History

Version:	Change:	Effective Date:	Approved by:
A	NEW	APR-03-2020	B. Petti
B	Content review <i>Intended Use</i> added	AUG-22-2022	Service