

TS-1029	How to Adjust Roller Retract Sensor (for serial numbers below 0338)	Document Owner: Service Department	Effective Date: APR-03-2020	Page 1 of 6
----------------	--	--	---------------------------------------	--------------------

Purpose

This document explains the proper way to adjust the roller retract sensor. If you are getting an error saying the roller is not retracted even though it is, and there is no physical blockage, Scinomix recommends adjusting the roller retract sensor.

Note: This document is specific only to instruments with a serial number below 0338.

Required Material and Equipment

- 3mm Allen key
- 2.5mm Allen wrench

Intended Audience

End users of the Sci-Print VX2, VXL, and SOLO

Prerequisites

An error saying the roller is not retracted even though it is, and there is no physical blockage.

Procedure

1. Remove the printer.
 - a. Release the air pressure to the unit by turning the blue knob on the rear of the unit.
 - b. Remove stainless steel label tensioner by removing the only screw with a 3mm Allen wrench.



Figure 1.

TS-1029	How to Adjust Roller Retract Sensor (for serial numbers below 0338)	Document Owner: Service Department	Effective Date: APR-03-2020	Page 2 of 6
----------------	--	--	---------------------------------------	--------------------

2. Remove the 4 screws holding the printer to the base, using a 2.5mm Allen Wrench.

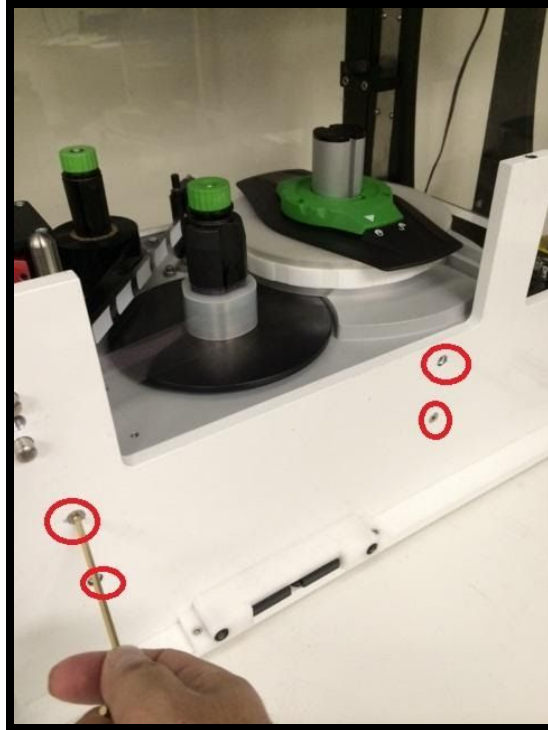


Figure 2.

3. Turn the run knob on the roller stage to allow you to move the stage out.



Figure 3.

4. Pull the stage out and disconnect the peel blow airline and barcode reader (if equipped).

TS-1029	How to Adjust Roller Retract Sensor (for serial numbers below 0338)	Document Owner: Service Department	Effective Date: APR-03-2020	Page 3 of 6
---------	--	--	---------------------------------------	--------------------



Figure 4.

5. Slightly pull the printer out toward the roller stage and unplug the power and Comm line from the back.

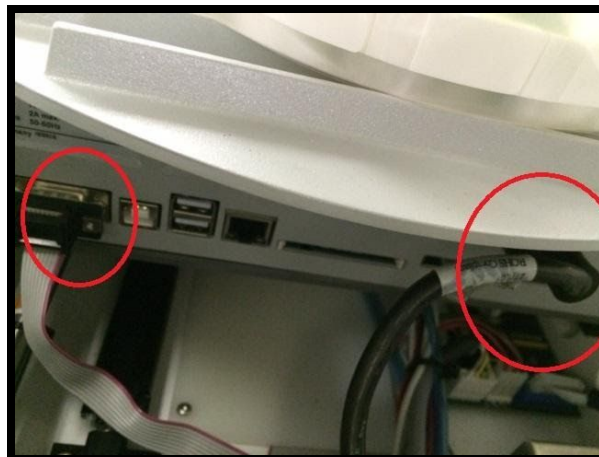


Figure 5.

TS-1029	How to Adjust Roller Retract Sensor (for serial numbers below 0338)	Document Owner: Service Department	Effective Date: APR-03-2020	Page 4 of 6
---------	--	--	---------------------------------------	--------------------

6. Carefully pull the printer up and out of the base.
7. Turn off the printer using its own power switch near the power outlet (this is so it doesn't short out when you plug it back in later).

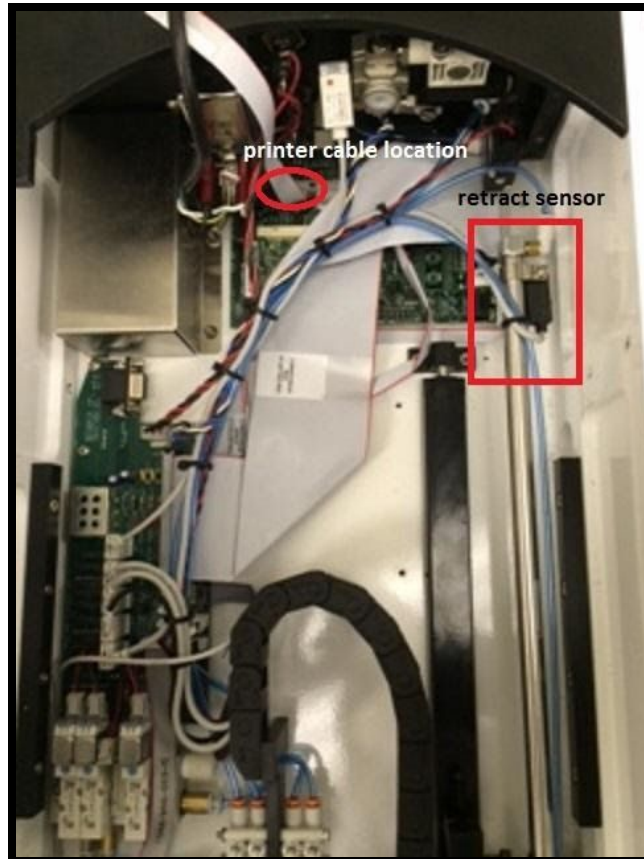


Figure 6.

TS-1029	How to Adjust Roller Retract Sensor (for serial numbers below 0338)	Document Owner: Service Department	Effective Date: APR-03-2020	Page 5 of 6
---------	--	--	---------------------------------------	--------------------

8. Push the roller assembly all the way in like it would be while labeling.
9. Loosen the screw holding the sensor to the shaft. And adjust left or right until the Red LED turns on while the roller assembly is retracted.

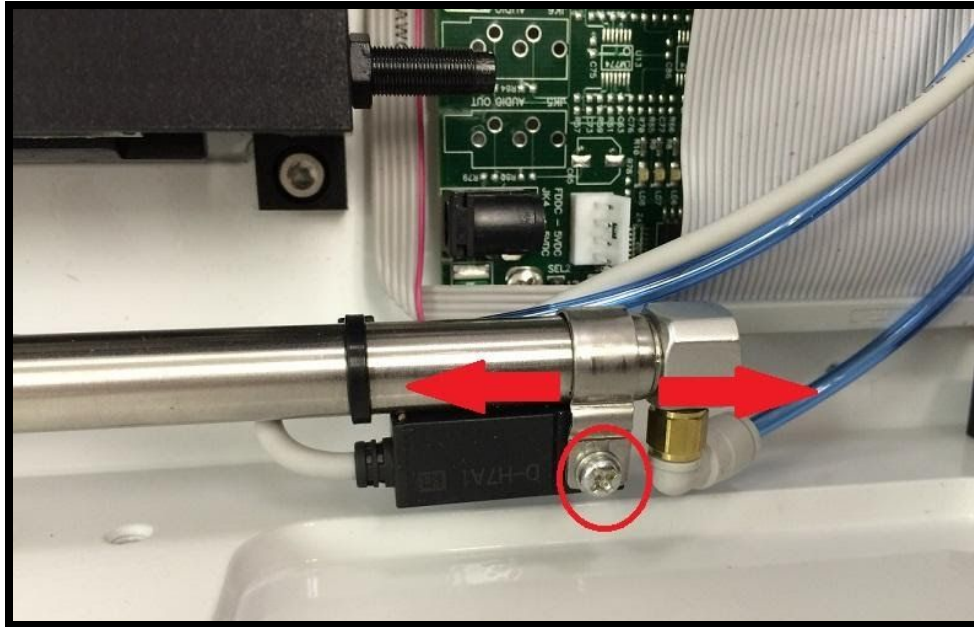


Figure 7.

10. Tighten the screw when the adjustment is complete.
11. Replace the printer and push it back then connect the communication line, and power line.

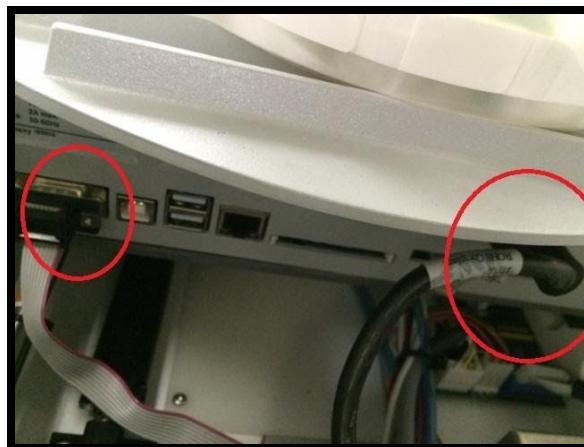


Figure 8.



TS-1029	How to Adjust Roller Retract Sensor (for serial numbers below 0338)	Document Owner: Service Department	Effective Date: APR-03-2020	Page 6 of 6
----------------	--	--	---------------------------------------	--------------------

12. Turn the printer back on using its power switch.
13. Push it back where it belongs, and screw in the four mounting screws.
14. Replace the stainless steel clamp.
15. Turn the air supply back on.
16. Use the Hardware window in the software to extend and retract the roller assembly, and watch the output LED turns ON when the roller is retracted.

If you need additional assistance, please call our service department at 314-298-9800 or email service@scinomix.com.

Definitions

N/A

Revision History

Version:	Change:	Effective Date:	Approved by:
A	NEW	APR-03-2020	B. Petti