

TS-1022	Required Printer and Roller Assembly Maintenance	Document Owner: Service Department	Effective Date: APR-24-2020	Page 1 of 7
---------	---	--	---------------------------------------	--------------------

Purpose

This document provides guidance for maintaining the Sci-Print VX2/VXL and SOLO. If the print head and rollers are not cleaned, adhesive residue build up from the labels can cause a wide range of problems, including misalignment of text on the label, errors in printing/applying labels, and improper tube handling in the roller assembly. This is a supplemental guide to the User Manual for your instrument.

Required Material and Equipment

- Alcohol wipes or alcohol and lint-free cloth (ex. KimWipe™)
- 4mm Allen Wrench
- 2.5mm Allen Wrench

Intended Audience

Scinomix End users

Procedure

Daily Maintenance (When in Use)

1. **Remove any dropped tubes or labels.**
 - a. Turn off internal air pressure with blue air shut off switch.
 - b. Unlock the roller assembly by pushing in on the black knob in Figure 1. and rotating 90 degrees until the word "RUN" is facing the front of the instrument.
 - c. Pull the roller assembly out of the left side of the instrument.

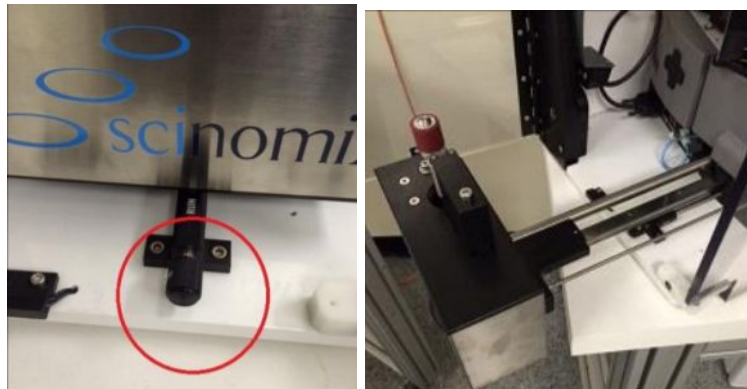


Figure 1.

TS-1022	Required Printer and Roller Assembly Maintenance	Document Owner: Service Department	Effective Date: APR-24-2020	Page 2 of 7
---------	---	--	---------------------------------------	--------------------

- d. Look inside the roller assembly for any tubes.

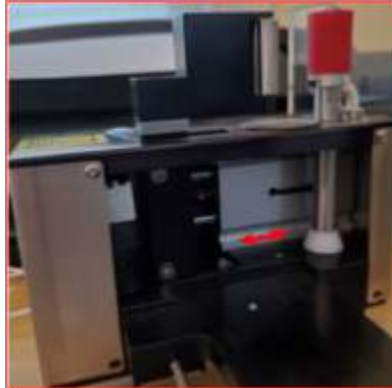


Figure 2.

2. **Deck plate** - Clean the deck after each run with a water-dampened lint-free cloth (mild detergent can be used if necessary).
3. **Red roller and clamp roller** - Remove with a 4mm Allen wrench, clean with alcohol wipe, and replace the red roller and clamp roller.

Note: Ensure the two steel rollers of the clamp roller are centered on the red roller when reinstalling.



Figure 3.

4. Check the label stock and ribbon to ensure there's enough for the next run.

TS-1022	Required Printer and Roller Assembly Maintenance	Document Owner: Service Department	Effective Date: APR-24-2020	Page 3 of 7
---------	---	--	---------------------------------------	--------------------

5. Power down the instrument (optional).

Periodic Maintenance (When changing Labels/Ribbon)

1. Clean the following with alcohol wipes.
 - a. **Label tensioner rollers** - Clean both pinching rollers with alcohol wipe, dry with lint-free cloth. (A2+ model printer label tensioner is mounted in a different position, but functions the same way).



Figure 4.

- b. **Label gap sensor** - Look for any stuck labels, then floss with alcohol wipe. (Wipe should not be too wet with alcohol). (A2+ model printer label gap sensor is in the same position, but looks slightly different. Clean the same way)



Figure 5.

TS-1022	Required Printer and Roller Assembly Maintenance	Document Owner: Service Department	Effective Date: APR-24-2020	Page 4 of 7
---------	---	--	---------------------------------------	--------------------

- c. **Print Drive Roller** - Remove to clean with alcohol wipe. Dry with lint-free cloth and reinstall. (A2+ model printer rollers are removed by removing the entire black cap holding them in)
Note: Print Drive Roller has exposed metal at top, where Rewind Assist Roller does not.

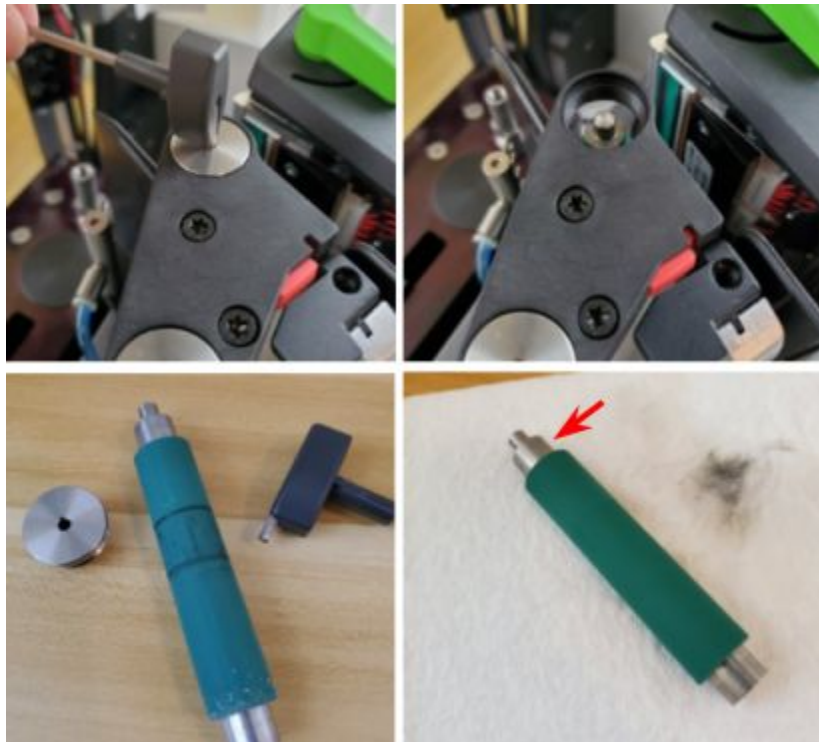


Figure 6.

- d. **Print head surface** - Use one finger, wipe up with alcohol wipe.
Note: DO NOT SCRUB. Scrubbing can damage the print head.

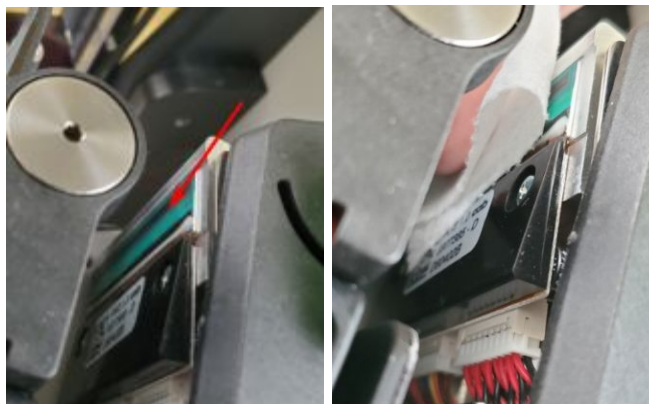


Figure 7.

TS-1022	Required Printer and Roller Assembly Maintenance	Document Owner: Service Department	Effective Date: APR-24-2020	Page 5 of 7
---------	---	--	---------------------------------------	--------------------

e. **Peel plate assembly** - Removing the peel plate assembly should only be done if the rollers have labels/adhesive on them, otherwise cleaning the peel edge with an alcohol wipe can be done while the peel plate assembly is still mounted on the printer.

If cleaning the rollers - disconnect peel blow tubing, loosen mounting screw and pull peel plate assembly off the instrument for cleaning. Make sure the 4 nozzles of the peel blow bar are pointing at the tip of the peel edge (adjust if necessary using the screw on the top of the peel blow bar).

Note: When remounting the peel plate assembly, make sure the right edge of the peel plate aligns with the boss. Failing to do so can cause labels to drift up/down in the print head.

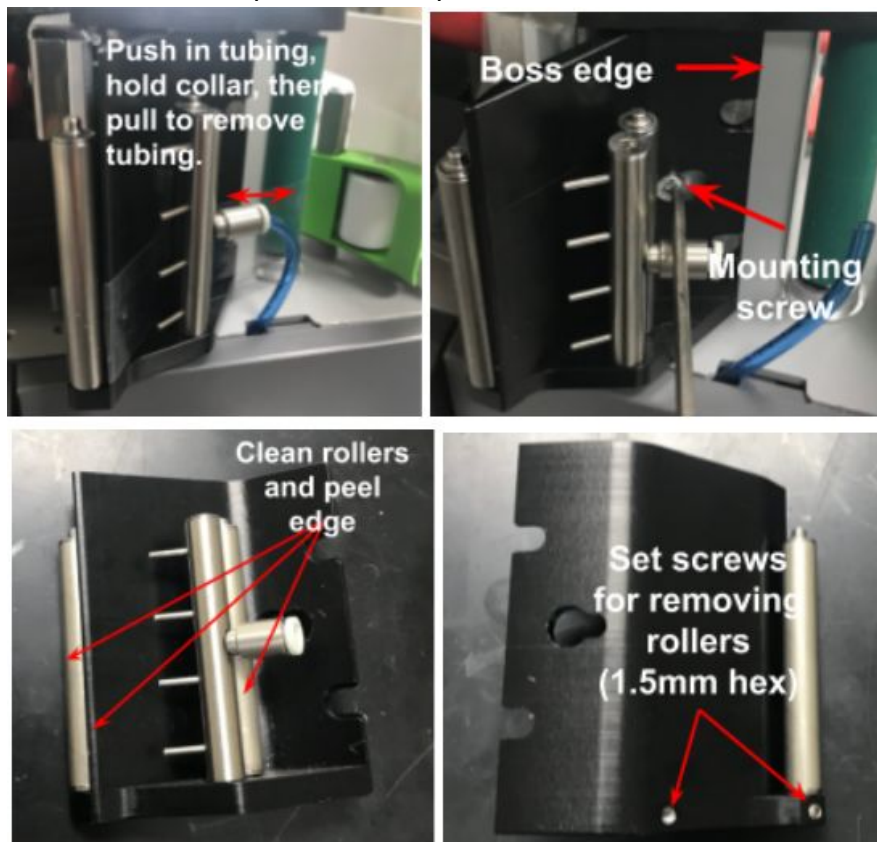


Figure 8. Some peel plate designs have less rollers. Please contact Sales@Scinomix.com if you would like this updated design.

TS-1022	Required Printer and Roller Assembly Maintenance	Document Owner: Service Department	Effective Date: APR-24-2020	Page 6 of 7
---------	---	--	---------------------------------------	--------------------

- f. **Rewind Assist Roller (Cleaning this roller is optional)** - Remove to clean with alcohol wipe. Dry with lint-free cloth and reinstall. (A2+ model printer rollers are removed by removing the entire black cap holding them in)



Figure 9.

- g. **Roller clamp** - Clean with alcohol wipes (Not necessary to remove).(A2+ model printer roller clamp looks slightly different. Clean the same way).



Figure 10.

2. Dust the surface of the printer and the inside surfaces of the instrument.



TS-1022	Required Printer and Roller Assembly Maintenance	Document Owner: Service Department	Effective Date: APR-24-2020	Page 7 of 7
----------------	---	--	---------------------------------------	--------------------

If you need additional assistance, please call our service department at 314-298-9800 or email service@scinomix.com.

Definitions

N/A

Revision History

Version	Change	Effective Date	Approved by:
A	New	APR-24-2020	B. Petti