

TS-1013	How to Adjust Pneumatic Gripper Head Sensors	Document Owner: Service Department	Effective Date: APR-13-2020	Page 1 of 4
---------	--	---------------------------------------	--------------------------------	-------------

Purpose

This document provides the steps required to adjust gripper head sensors. If the gripper fails to pick up a tube after attempting, or the gripper picks up the tube but the software displays an error stating the tube was not picked up.

Required Material and Equipment

- Small flat head screwdriver

Intended Audience

Certified Scinomix Service Technicians

Prerequisites

N/A

Procedure

1. Engage the E-stop for the unit.
2. Move the grip head to a location where it is easily accessible.
3. Dis-engage the E-stop.
4. Turn off the air supply to the unit.

Gripper Head Operational States

The following images show the grip head in various states of operation, as well as the adjustment set screw to be used for adjustments.

1. The gripper with an open sensor ON.

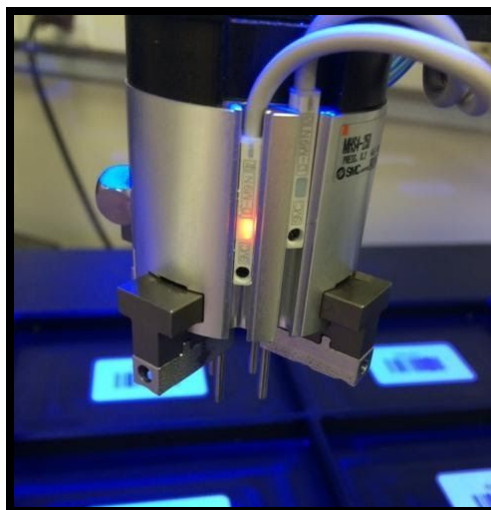


Figure 1.

TS-1013	How to Adjust Pneumatic Gripper Head Sensors	Document Owner: Service Department	Effective Date: APR-13-2020	Page 2 of 4
---------	--	---------------------------------------	--------------------------------	-------------

- The gripper with the closed sensor ON.



Figure 2.

- The gripper in a position thinking it has a tube.

Note: Neither LED is on.



Figure 3.

- The Set screw to be loosened if an adjustment is to be made.

TS-1013	How to Adjust Pneumatic Gripper Head Sensors	Document Owner: Service Department	Effective Date: APR-13-2020	Page 3 of 4
---------	--	---------------------------------------	--------------------------------	-------------

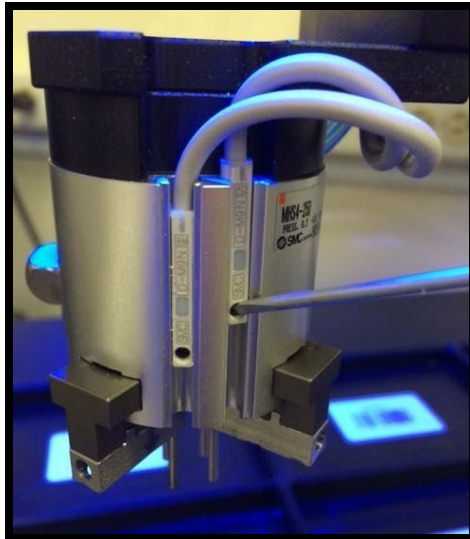


Figure 4.

To adjust these sensors:

1. Start with the open sensor, this is the sensor which turns on when the grip fingers are open fully. Loosen the black set screw with a small flat head screwdriver.
2. Move the sensor in the opposite direction of the other sensor (shown below) until it turns off.
3. Move it back by tiny increments until the LED turns on. This is the optimal point of adjustment.

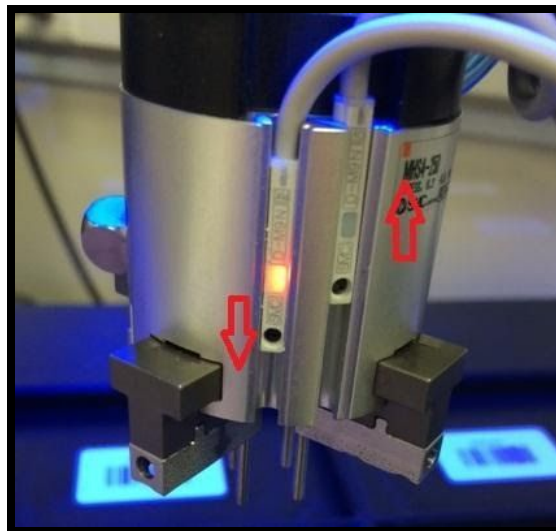


Figure 5.

3. Tighten the set screw.

TS-1013	How to Adjust Pneumatic Gripper Head Sensors	Document Owner: Service Department	Effective Date: APR-13-2020	Page 4 of 4
----------------	---	--	---------------------------------------	--------------------

4. Use the same process to set the closed sensor.
5. Turn on the air to the unit.
6. Open the hardware screen in the software.
7. Click the gripper output and watch as the inputs change from open to close.

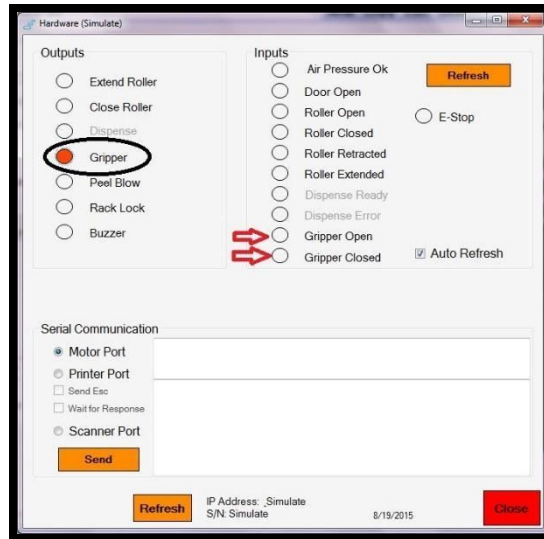


Figure 6.

If you need additional assistance, please call our service department at 314-298-9800 or email service@scinomix.com.

Definitions

N/A

Revision History

Version:	Change:	Effective Date:	Approved by:
A	NEW	APR-13-2020	B. Petti