

TS-1003	How to Measure Label Stock	Document Owner: Service Department	Effective Date: APR-13-2020	Page 1 of 4
----------------	-----------------------------------	--	---------------------------------------	--------------------

Purpose

This guide provides the steps required to measure label stock for the Sci-Print VX2/VXL, and Solo. Labels measured incorrectly can result in incomplete printing on the label, printing multiple labels at once, and text drifting.

Required Material and Equipment

Roll of labels
Ruler, or caliper

Intended Audience

End users.

Prerequisites

N/A

Procedure

1. To measure label stock, select **Label Stock** from the Configuration menu.

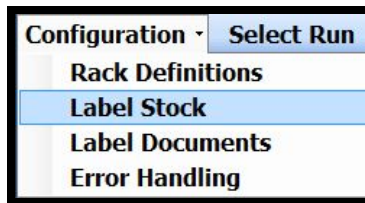


Figure 1.

The Label Stock Editor window opens.

TS-1003	How to Measure Label Stock	Document Owner: Service Department	Effective Date: APR-13-2020	Page 2 of 4
----------------	-----------------------------------	--	---------------------------------------	--------------------

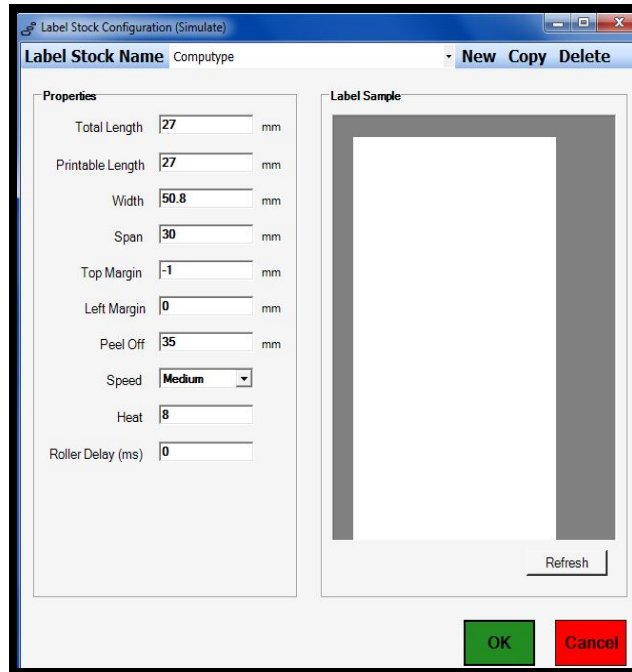


Figure 2. (SciPrintVX Software v 2.2 or earlier)

This window allows the user to define the physical characteristics of the label being used, including the length of the label, the width of the label, and the span of the label in millimeters (mm). The image below shows the proper measurements for width, length, and span on your labels.

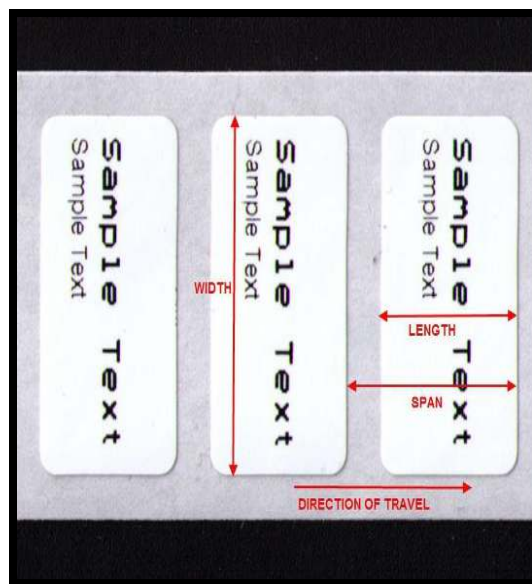


Figure 3. (dimensions in mm)

TS-1003	How to Measure Label Stock	Document Owner: Service Department	Effective Date: APR-13-2020	Page 3 of 4
----------------	-----------------------------------	--	---------------------------------------	--------------------

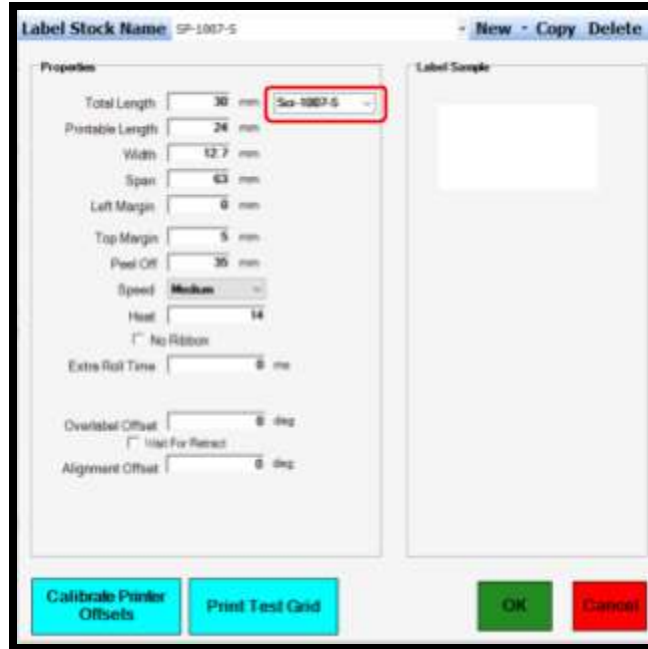


Figure 4. (SciPrintVX Software v 2.5) - In SciPrintVX software version 2.5, a dropdown list next to the Total Length field contains all Scinomix Label Kit part#s. Selecting the appropriate label part# will auto-populate the label characteristics.

- **Total Length:** The length of the label including clear over-wrap portions, measured left to right in mm.
- **Printable Length:** The length of the white part of the label (excluding any over-wrap portions if present), measured left to right in mm.
- **Width:** The length of the label, measured top to bottom in mm.
- **Span:** The length from the start of one label to the start of the next label, including the space in between the labels, measured left to right in mm.

If you need additional assistance, please call our service department at 314-298-9800 or email service@scinomix.com.

Definitions

N/A.

Revision History

Version:	Change:	Effective Date:	Approved by:
A	NEW	APR-13-2020	B. Petti



TS-1003	How to Measure Label Stock	Document Owner: Service Department	Effective Date: APR-13-2020	Page 4 of 4
----------------	---------------------------------------	--	---------------------------------------	--------------------