

| | | | | |
|----------------|--|--|---------------------------------------|--------------------|
| TS-1001 | How to Remove the CAB A2+ Printer | Document Owner: Service Department | Effective Date: APR-03-2020 | Page 1 of 4 |
|----------------|--|--|---------------------------------------|--------------------|

Purpose

This document provides the steps required to remove and/or replace the Cab A2+ printer on the Sci-Print VX2/VXL.

Required Material and Equipment

N/A

Intended Audience

End users of the Sci-Print VX2/VXL or SOLO

Prerequisites

N/A

Procedure

1. Remove the stainless steel label tensioner by removing the only screw.

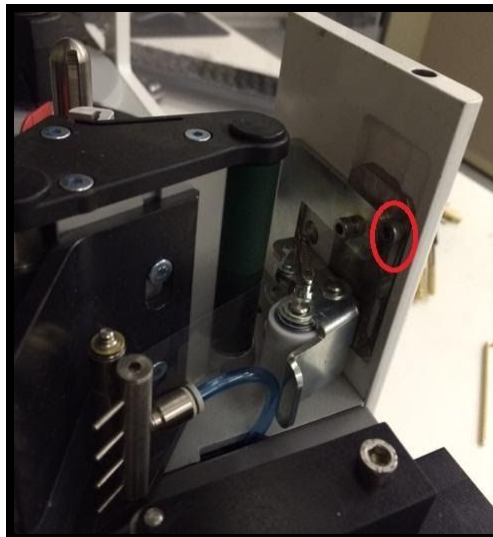


Figure 1.

2. Remove the 4 screws holding the printer to the base.

| | | | | |
|----------------|--|--|---------------------------------------|--------------------|
| TS-1001 | How to Remove the CAB A2+ Printer | Document Owner: Service Department | Effective Date: APR-03-2020 | Page 2 of 4 |
|----------------|--|--|---------------------------------------|--------------------|



Figure 2.

3. Turn the run knob on the roller stage to pull the stage out.



Figure 3.

| | | | | |
|----------------|--|--|---------------------------------------|--------------------|
| TS-1001 | How to Remove the CAB A2+ Printer | Document Owner: Service Department | Effective Date: APR-03-2020 | Page 3 of 4 |
|----------------|--|--|---------------------------------------|--------------------|

4. Pull the stage out and disconnect the peel blow airline and barcode reader (if equipped).



Figure 4.

5. Slightly pull the printer out toward the roller stage and unplug the power and Comm line from the back.

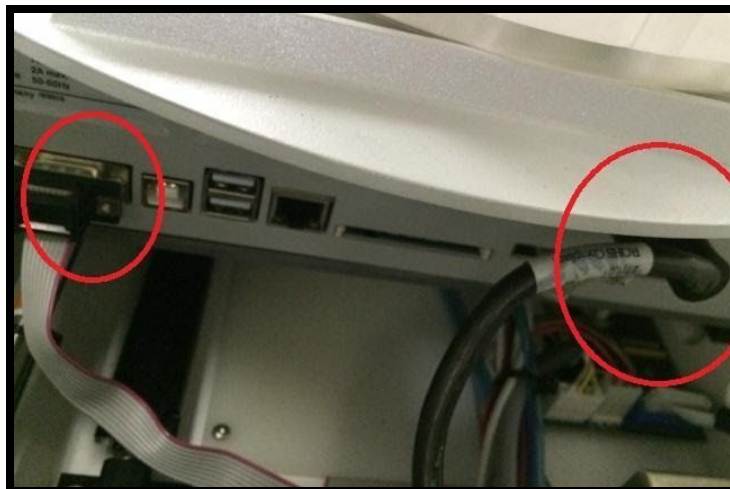


Figure 5.

6. The printer is now free to remove from the unit.
7. Replace with a new printer by following the reverse order.



| | | | | |
|----------------|--|--|---------------------------------------|--------------------|
| TS-1001 | How to Remove the CAB A2+ Printer | Document Owner: Service Department | Effective Date: APR-03-2020 | Page 4 of 4 |
|----------------|--|--|---------------------------------------|--------------------|

If you need additional assistance, please call our service department at 314-298-9800 or email service@scinomix.com.

Definitions

N/A

Revision History

| Version: | Change: | Effective Date: | Approved by: |
|-----------------|----------------|------------------------|---------------------|
| A | NEW | APR-03-2020 | B. Petti |